



Use MS Word Readability Statistics

By
John L. Daly
MBA, CPA, CMA, CPIM

Executive Education, Inc.
(734) 475-0600

www.ExecutiveEducationInc.com

Word Will Identify

- Improper grammar
- Passive sentences
- Run-on sentences
- Slang or jargon
- Split infinitives
- Unnecessary words
- Sentence fragments

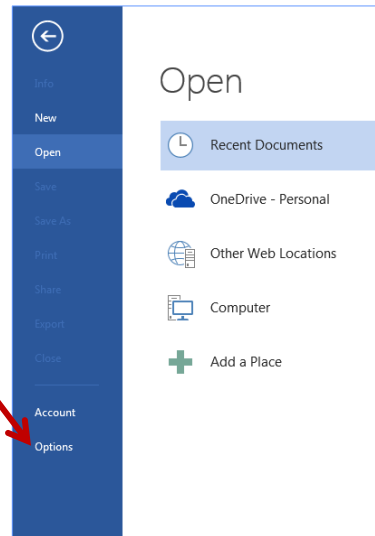


Executive Education, Inc., © 2014

2

Turn on Statistics and Proofing Tools

Select “Options” on the “Open” menu

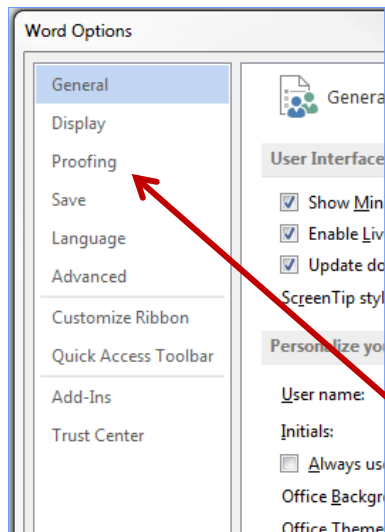


MS Word 2013 shown.
Other versions are similar



Executive Education, Inc., © 2014

3

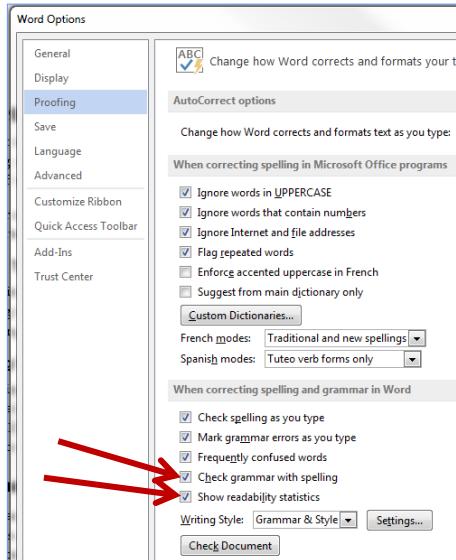


■ Select “Proofing” Menu



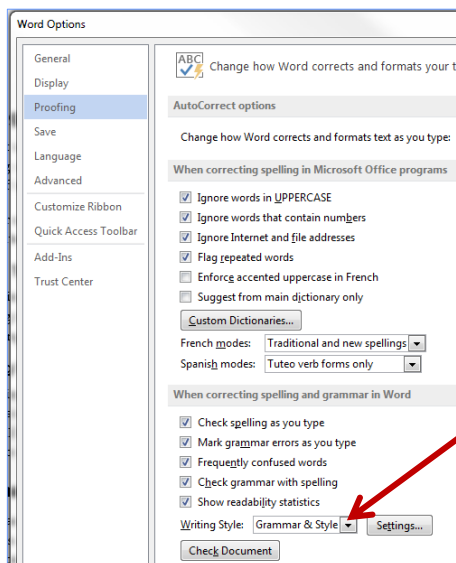
Executive Education, Inc., © 2014

4



Then turn on all of the grammar checking and readability features

Identifies problems with green squiggly underlines

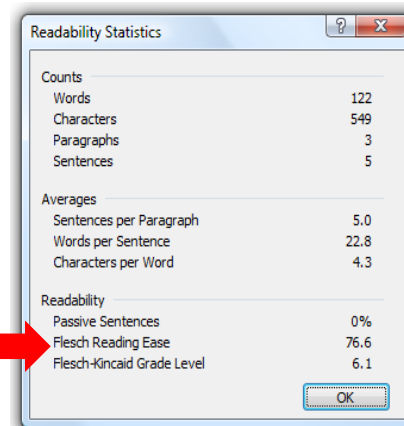


Toggle the writing style to “Grammar & Style” to fully utilize the feedback features.

Your Writing Quality

At the end of every spell check, Word will provide statistics you can use to improve your writing.

Focus on the last three numbers.



Creating these screen captures was easy using **Snagit** software by TechSmith.

Then, Work to....

- Make passive sentence counts very low (< 5%)
- Make readability score high
- Make grade level at least 4-5 levels below your reader's educational attainment



Thank-you!

Have thoughts or feedback
regarding this webinar? Feel free to
contact:

John L. Daly

Daly@ExecutiveEducationInc.com

